

SPARE PARTS

DUST COLLECTOR

Model. DC-7

Order Code W329

Edition No : DC7-1

Date of Issue : 10/2021

The following section covers the spare parts diagrams and lists that were current at the time this manual was originally printed. Due to continuous improvements of the machine, changes may be made at any time without notification.

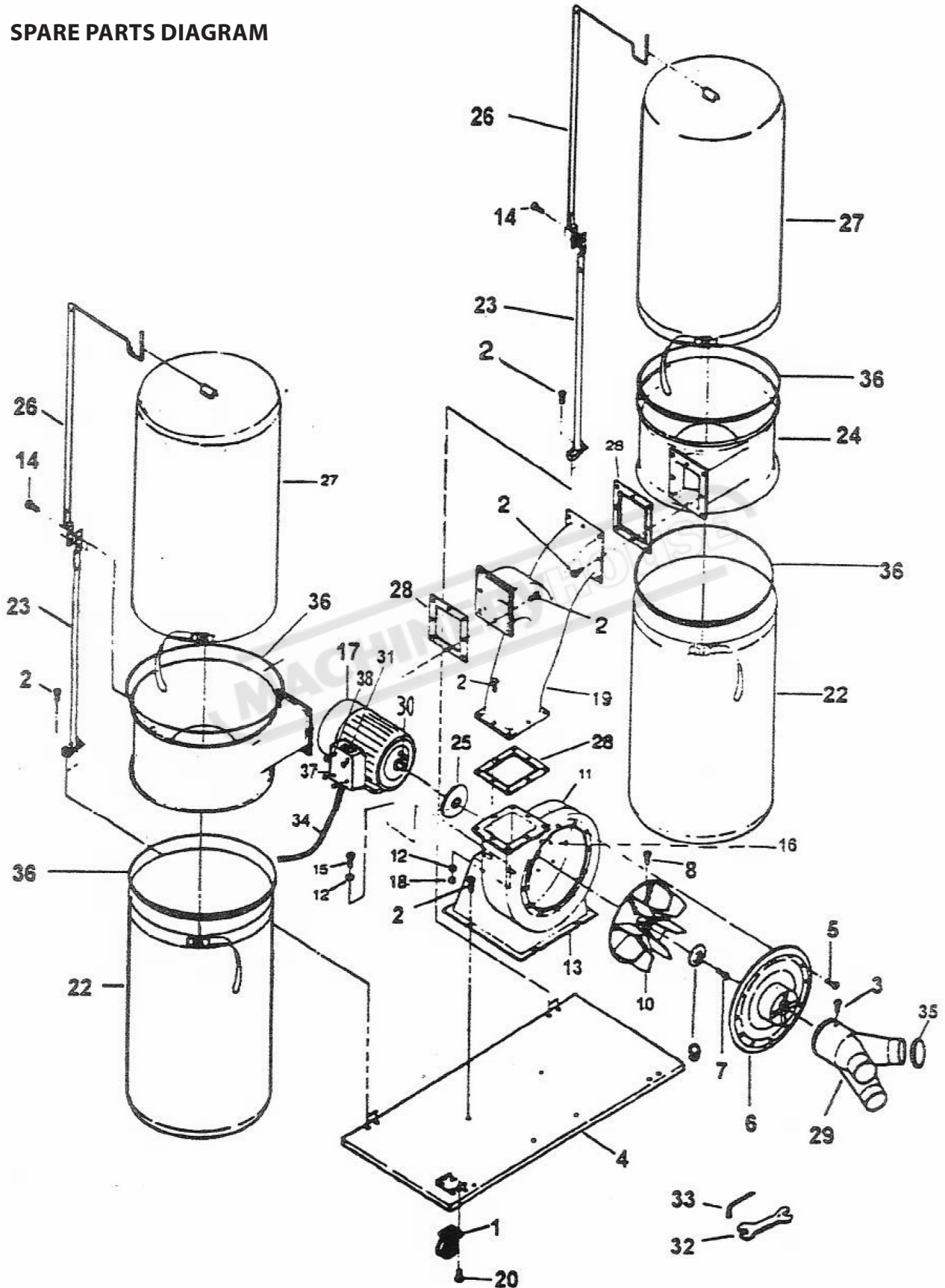
HOW TO ORDER SPARE PARTS

1. Have your machines model number, serial number & date of manufacture on hand, these can be found on the specification plate mounted on the machine
2. A scanned copy of your parts list/diagram with required spare part/s identified.

NOTE: SOME PARTS MAY ONLY BE AVAILABLE AS AN ASSEMBLY

3. Go to www.machineryhouse.com.au/contactus and fill out the inquiry form attaching a copy of scanned parts list.

SPARE PARTS DIAGRAM



SPARE PARTS LIST

No.	Description
1.	Caster
2.	Hex Head Screw
3.	Screw
4.	Base Plate
5.	Pan Head Screw
6.	Inlet Cover
7.	Socket Hex Head Screw
8.	Hex Head Screw
9.	Washer
10.	Turbo Fan
11.	Collector Body
12.	Washer
13.	Motor Support
14.	Hex Head Screw
15.	Hex Head Screw
16.	Bolt
17.	Motor
18.	Nut
19.	Outlet
20.	Screw
21.	Left Collector
22.	Collector Bag
23.	Collector Support
24.	Right Collector
25.	Packing
26.	Upper Bag Support
27.	Filter Bag
28.	Packing
29.	Inlet
30.	Key
31.	Switch
32.	Open End Wrench
33.	Hex Wench
34.	Cable
35.	Cap
36.	Bag Clamp
37.	Switch Box
38.	Pan Head Screw

NOTE: SOME INDIVIDUAL PARTS MAY ONLY BE AVAILABLE AS AN ASSEMBLY